



Technology Newsletter End of Summer Edition August 2011



BHS Gets a New Internal Local Area Network (LAN)

In an effort to build in the network capacity needed to run a 21st century high school a completely new network infrastructure rewire took place in June at BHS. The entire school now is the only one currently in the district running completely at 1 Gigabit per second. A poorly wired network caused many problems in 2010/2011. Pictures shown later in this Newsletter.

NEW | Gigabit Fiber Network Fully Functional

It is a pleasure to inform the Staff of the Brush School District that the installation phase of the new fiber-optics is complete and the District buildings are now connected via this high bandwidth (information carrying capacity) medium.

We in Technology are pleased to be part of this enhancement. Interestingly, the cost of this new state-of-the-art

network is nearly that of the cost the district paid to Qwest to operate the low-bandwidth T1 lines which have been removed from production. This type network connectivity is known as a Wide Area Network or WAN.

WANs are used to connect the LANs or Local Area Networks, so that users and computers in one school can communicate with

users and computers in other district locations and gain high speed access to servers.

To sum it up—the main advantages of a Fiber Optic system are:

- Information carrying capacity is greatly increased.
- Information can be transmitted at a much higher speed over long distances.

What is NEW in the District This School Year?

New 1Gbit WAN

New 26 seat Student Lab at BMS

New 28 seat Research Lab at BMS

New 1Gb internal Local Area Network (LAN) installed at BHS.

New Student Lab at Beaver Valley

New 1Gbit network backbone installed at BMS

New Plato Lab at BHS

All BHS teachers now on Windows 7 and new PCs

State-of-the-art Document Cameras

BHS Library lab

given new and more manageable look

New lab layout for both labs at BMS

Mini-labs installed: BMS Shop; BV Lib, BHS SPED

New Online—Modern Accounting System

New HoverCam Document Cameras

Training will be held during the staff time before school starts to inform you about the new HoverCam T3 document cameras.

To qualify to receive a HoverCam you must attend this training.

HoverCams are ultra portable with a tiny footprint. They produce smooth, HD video images that are always in focus, making your visual presentation a "wow" experience.

In addition to being a presentation camera, use the T3's scanning ability to digitize your filing system, archive and manage class work,

assignments, artwork.

The included HoverCam makes managing scanned files and full screen presentations easy.

- Real time video projection, perfect for interactive teaching, visual presentations, distance learning and online demonstrations.

- Small footprint, with a 4" x 5" oval base, 21" height. Weighs just 2 lbs.

Rugged for schools. Built-in microphone with one-touch recording, USB powered, energy efficient



Technology Department Has New Home

We are thankful to Beaver Valley and BHS for the opportunity they provided for us to have temporary office space during the 2010/2011 school year.

Technology now resides in the Industrial Arts building near BMS. The City of Brush has given an actual street address of) (402 Mill Street) to the building. These are the reasons that this new home makes sense:

- 1. Deliveries of the many technology shipments can now be made directly to the Department.**
- 2. A new Technology Professional Development classroom has been established within the new location to allow for technology training for district staff via brown-bag lunch discussions or after hours events.**
- 3. Ease of access to the District Technology Committee members, contractors, and general public.**
- 4. Service bench allowing Technology staff to make repairs on devices with adequate power, etc.**



Photos:

Brush Middle School Technology Classroom Lab



Brush Middle School Student Lab— note new configuration



Beaver Valley Elementary Technology Classroom



Photos:



Beaver Valley Library Mini-Lab



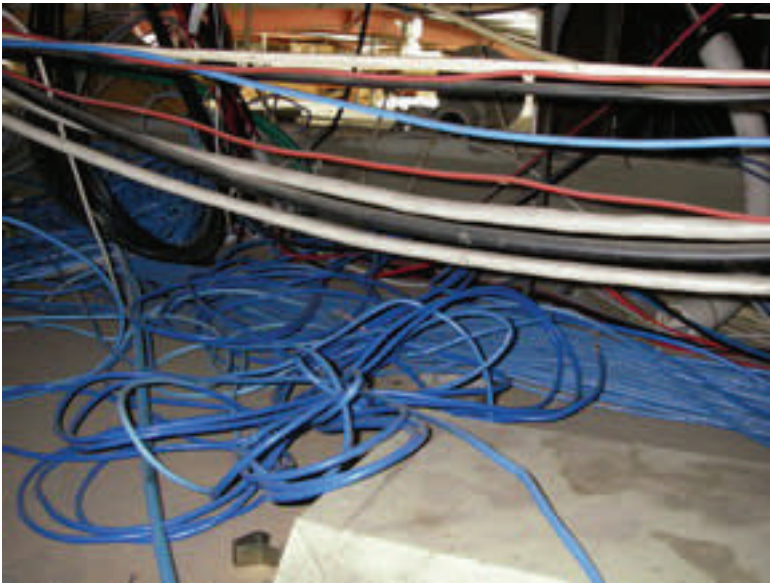
**Brush High School Library Mini-lab
takes on new look**



**Greater Server Consolida-
tion - This picture shows
the servers at Beaver Val-
ley.**

**The new fiber network
connects this server room
at high speeds to all district
server rooms.**

BHS REWIRE



Before Rewire (shown Above) BHS resembled a rat's nest.

Network switches in multiple locations and hidden in ceilings and backrooms.

The new BHS wiring (right) provides the school an very organized 1 Gigabit internal Local Area Network in the District.

All network switches now reside in only 3 locations within the building and problem isolation time will be greatly reduced.

Each room has a new connection to this high bandwidth large capacity infrastructure.

